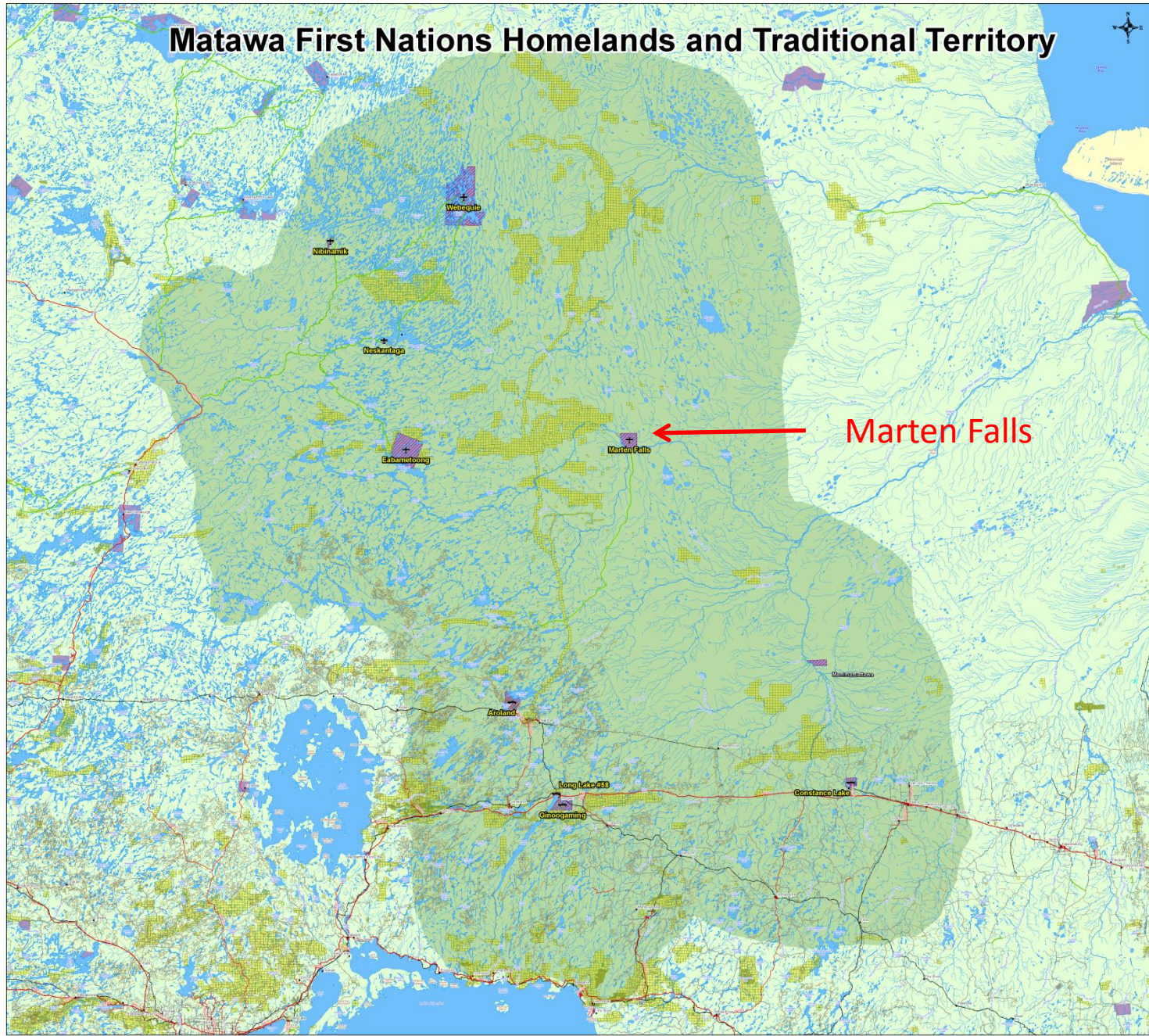
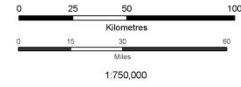




# Matawa First Nations Homelands and Traditional Territory



**Matawa**  
FIRST NATIONS MANAGEMENT  
The Power of Unity  
The Dignity of Difference



- Road Access Community
- Air Access Community
- Winter Road
- Major Highway
- Paved Road
- Primary Road
- Resource Road
- Railway
- Active Mining Claims (Oct. 2013)
- River
- Waterbody
- Matawa Member Community
- First Nation Community
- Matawa Shared Traditional Territory



Coordinate System: NAD 1983 UTM Zone 19N  
 Created by: VD Four Rivers, Matawa  
 Acknowledgements: Data provided by the Ontario Ministry of Natural Resources and the Ministry of Northern Development and Mines, Natural Resources Canada Topographic  
 Disclaimer: Map is for discussion purposes only. Matawa First Nations Management makes no guarantee the accuracy of the information displayed and is not responsible for any decisions made on the basis of this data. This map cannot be relied upon for navigation purposes.  
 Roads (MNR, Road, Signage) may be inaccurate and requires verification.  
 The Matawa Traditional Homeland Area identifies the general area commonly used for both current and past human activities but may not represent all areas worthy of special consideration.  
 QA # FRG MAP 001  
 Dept: Four Rivers  
 Matawa Environmental Services Group  
 Issue Date: 8 May 2012  
 Revision #Date: 2 / 16 October 2013  
 Approved by: VD  
 Document: Homelands Map