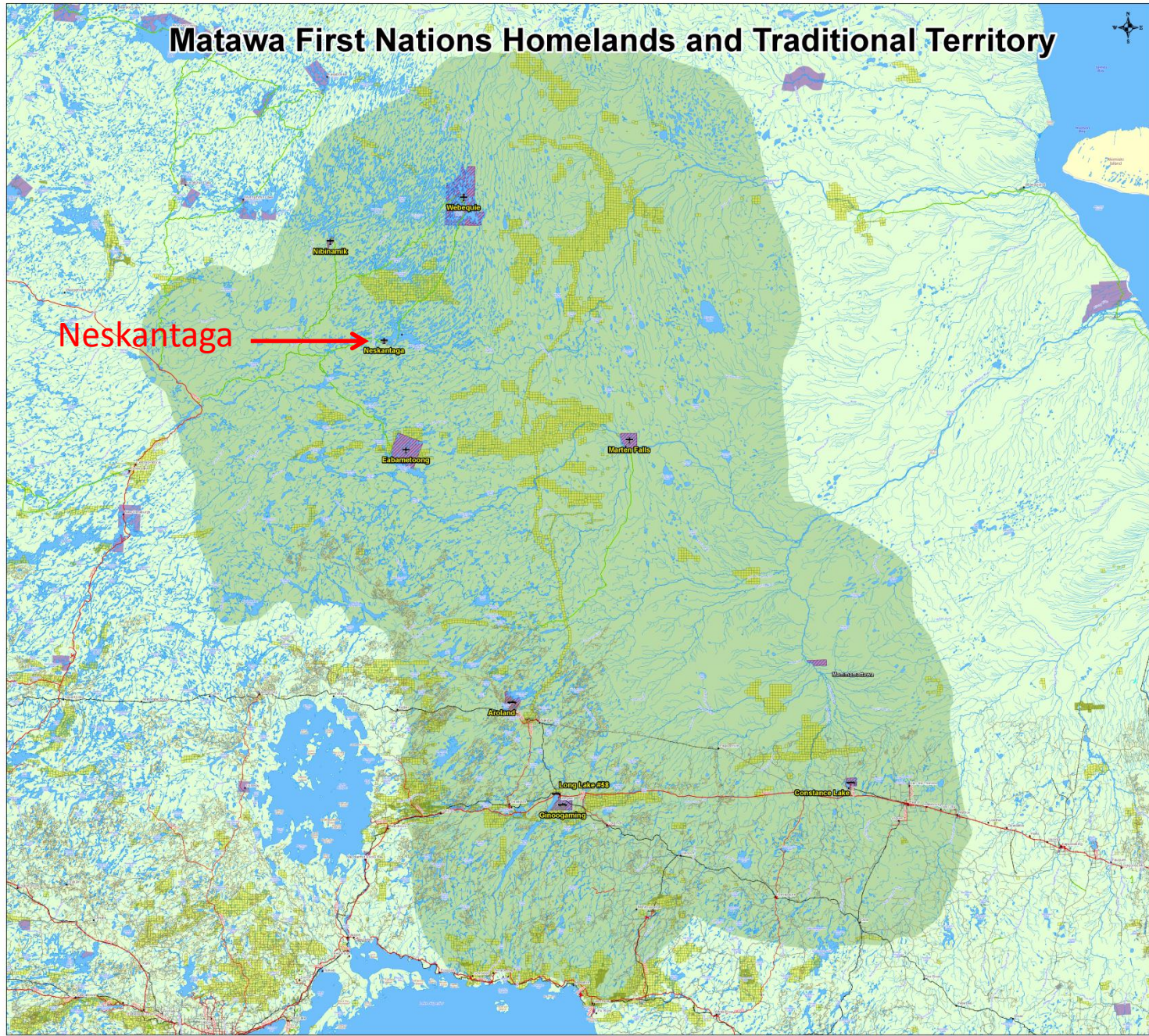
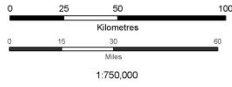




Matawa First Nations Homelands and Traditional Territory



Matawa
FIRST NATIONS MANAGEMENT
The Power of Unity
The Dignity of Difference



1:750,000

+	Road Access Community
+	Air Access Community
—	Winter Road
—	Major Highway
—	Paved Road
—	Primary Road
—	Resource Road
—	Railway
■	Active Mining Claims (Oct. 2013)
—	River
■	Waterbody
■	Matawa Member Community
■	First Nation Community
■	Matawa Shared Traditional Territory



Coordinate System: NAD 1983 UTM Zone 19N
Created by: VD Four Rivers, Matawa
Acknowledgements: Data provided by the Ontario Ministry of Natural Resources, Ministry of Northern Development and Mines, Natural Resources Canada Toporama
Disclaimer: Map is for discussion purposes only. Matawa First Nations Management makes no guarantee the accuracy of the information displayed and is not responsible for any decisions made on the basis of this data. This map cannot be relied upon for navigation purposes.
Roads (MNR, Road, Signage) may be inaccurate and requires verification.
The Matawa Traditional Homeland Area identifies the general area commonly used for both current and past human activities but may not represent all areas worthy of special consideration.
QA # FRIG MAP 001
Dept: Four Rivers
Matawa Environmental Services Group
Issue Date: 8 May 2012
Revision #Date: 2 / 16 October 2013
Approved by: VD
Document: Homelands Map