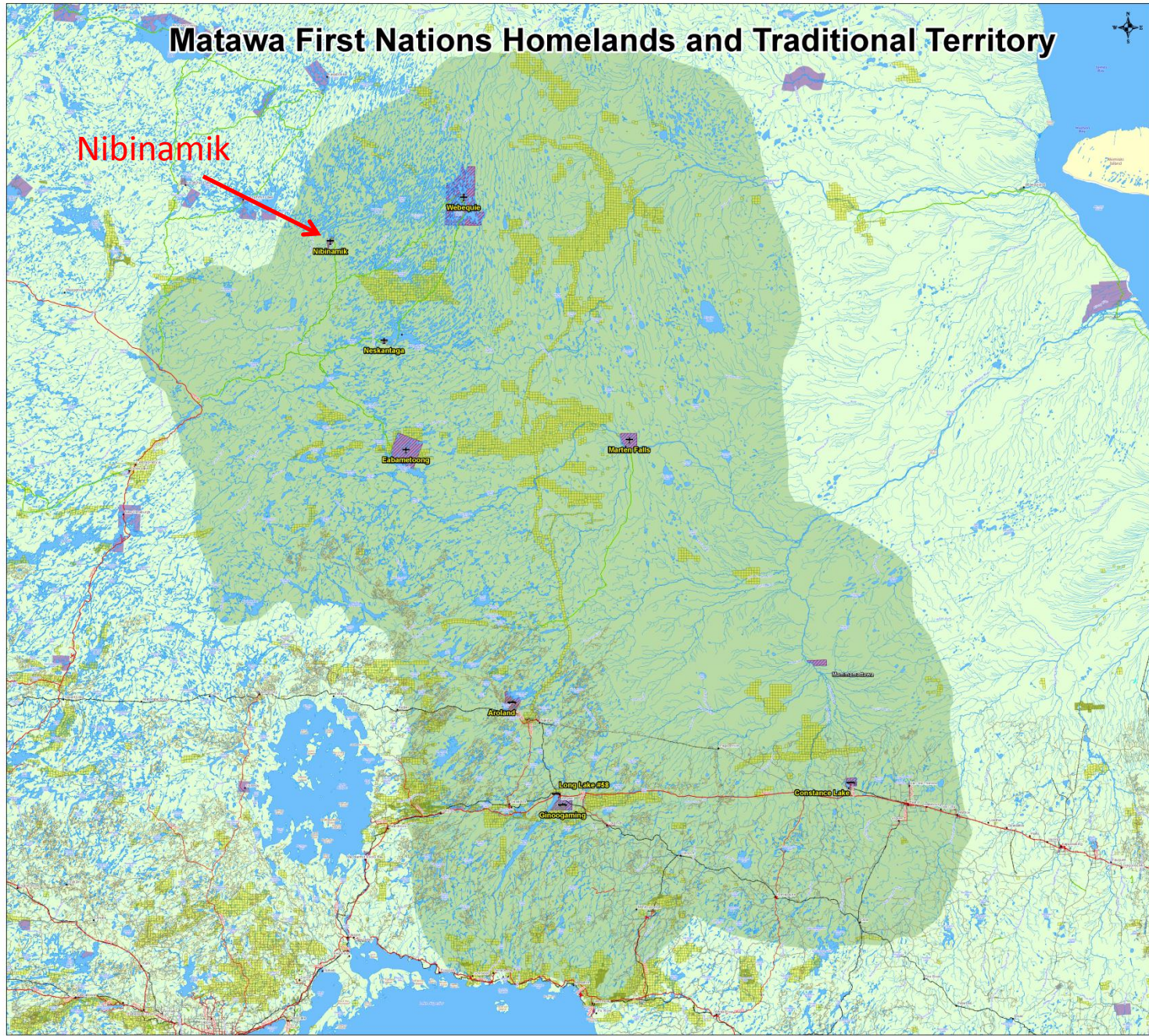




Matawa First Nations Homelands and Traditional Territory

Nibinamik

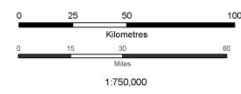


Matawa

FIRST NATIONS MANAGEMENT

The Power of Unity
The Dignity of Difference

Area of Interest



- Road Access Community
- Air Access Community
- Winter Road
- Major Highway
- Paved Road
- Primary Road
- Resource Road
- Railway
- Active Mining Claims (Oct. 2013)
- River
- Waterbody
- Matawa Member Community
- First Nation Community
- Matawa Shared Traditional Territory



Coordinate System: NAD 1983 UTM Zone 18N

Created by: VD Four Rivers, Matawa
Acknowledgements: Data provided by the
Ontario Ministry of Natural Resources
Ministry of Northern Development and Mines
Natural Resources Canada Toporama

Disclaimer: Map is for discussion purposes only.
Matawa First Nations Management makes no
guarantee the accuracy of the information displayed
and is not responsible for any decisions made on the
basis of this data. This map cannot be relied upon
for navigation purposes.
Roads (MNR, Road, Signage) may be inaccurate and
requires verification.

The Matawa Traditional Homeland Area identifies
the general area commonly used for both current
and past human activities but may not represent
all areas worthy of special consideration.

QA #: FRIG MAP 001
Dept: Four Rivers
Matawa Environmental Services Group
Issue Date: 8 May 2012
Revision #Date: 2 / 16 October 2013
Approved by: VD
Document: Homelands Map